



Therefore, *my beloved* brothers,

**BE STEADFAST  
IMMOVABLE**

*always abounding in the work*

OF THE LORD

knowing that in the Lord

**YOUR LABOR**

*is not in vain.*

FIRST CORINTHIANS FIFTEEN FIFTY EIGHT



2016 ANNUAL REPORT



*Steadfast; Our Mission Carries On.* This is the 2016 theme for the Erie City Mission. For 105 years our story has remained the same.

There has always been *significant need* in the lives of so many in our area – poverty, hunger, homelessness, drug & alcohol addiction, lack of opportunity, loneliness and spiritual emptiness. But there has always been *great hope* for those who come to the Erie City Mission – food, shelter, addiction recovery programs, educational & vocational opportunity, community and love in the name of Jesus Christ. A light shining in the darkness.

Many changes and milestones have occurred in 2016. For one, I accepted the baton of leadership in January and have committed to carry this great Mission forward. Another, we achieved success with our *Mission Possible* capital campaign that will result in the building of a new kitchen, dining hall and chapel in 2017. Praise be to God!

Internally, the Mission continues to focus on our core programs and services while implementing a strategic restructure of operations to improve quality and remain good stewards of our resources.

Externally, challenges facing our city/region have strengthened our resolve to work collaboratively with other community stakeholders to provide solutions to these issues. As the Mission meets the needs of our guests and participants, we believe that a life restored and transformed can bring dramatic hope - to them, their family, their workplace, their neighborhood and to their community. This is Our City, Our Mission!

On behalf of the Board and Staff of the Erie City Mission, thank you to everyone that has partnered with and refreshed us this year to continue this great work. We pray that “he who refreshes others will himself be refreshed.” (Proverbs 11:25).

A handwritten signature in black ink, which appears to read "Stephen Westbrook".

Stephen Westbrook, Executive Director

---

### Board of Directors

---

Marshall Piccinini, Chairman - Leo Heintz, Vice-Chairman - Greg Paulding, Treasurer - Kathy Griffith, Secretary  
David Bell - Marsha Marsh - Doug Nelson - D. Rick Prokop - Matthew Sahlmann - Richard Simpson

"I have been given a new life. If it wasn't for the Mission, I would not be where I am today. For that I am truly grateful"

**- Jeffrey Baker**

*2008 New Life Program Associate  
2009 Associate of the Year  
Owner, Erie Greyhound Bus  
Station*



"We love learning about Jesus through the Bonkers 4 Jesus camp. It's really good for kids who don't get to go to Church."

**- Nachallee & Nicol Marty**

*Youth Ministry Program  
Participants  
Students at Robert Benjamin Wiley  
Community Charter School*

"It wasn't just about the food or clothing, it was about the kindness I was shown and the network of support they provided. They helped me out when I had nothing."

**- Martha Ginnery**

*Family Care Center Guest*



# OUR LOCATIONS AND CAMPUSES



**New Life Program &  
Samaritan Care Shelter**

The New Life Program (NLP) building, constructed in 2012, provides up to 38 beds for NLP men and 56 beds for Samaritan Care Shelter men. Shelter guests are invited to stay for 60 days and have access to meals, hot showers, laundry services and case management. NLP participants work the program from 8-12 months through recovery classes, bible studies, case management and counseling.



**Main Dining Hall**

The Mission's Main Dining Hall serves men, women and families experiencing hunger by providing up to 200 meals daily, including breakfast for our New Life Program participants and Samaritan Care Shelter guests and dinner for our New Life Program participants. Phase 2 of a 3-part Capital Campaign will allow for reconstruction of the Main Dining Hall facility; doubling our capacity to feed the hungry.



**Main Offices &  
Youth Ministries**

Our French Street building is our main facility, located in the heart of downtown Erie. Formerly the old National Fuel Gas building, 1017 French Street includes classrooms for our addictions recovery and youth ministry programs, office space for the Mission's administrative support staff and men's ministry counselors and is the in-take location for NLP applicants. Our administration building serves as the primary entry point for the public.



**Grace House**

Grace House is a caring and therapeutic place where single women, without children, can reside while committing to life transformation through addictions recovery, spiritual development, counseling, further education and the support they need to find healing. Grace House opened in 2014 and can shelter and care for up to nine women.

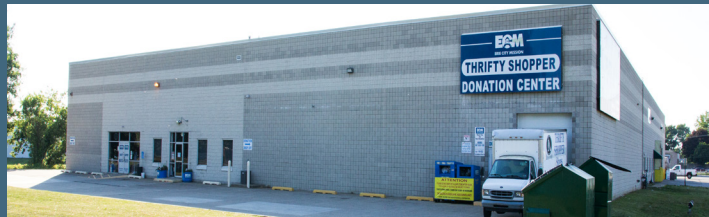


# OUR LOCATIONS AND CAMPUSES



**Family Care Center**

The Family Care Center (FCC), the site for the Mission's free food and clothing pantries, is located on 7th and French Street just a few blocks from the main administration building. Men, women and families in need of food, clothing and household items find assistance at this location. The FCC is one of only two food pantries in Erie whose services are not restricted by zip code or income.



**Donation Center**

Located on Erie's West side, our Donation Center (DC) is the central warehouse and distribution location for the Mission. Donated and repurposed items are sorted and designated for sale in both Thrifty Shopper retail stores or provided at no cost to Family Care Center guests. Donation trucks run roughly 40 pick-ups per week throughout Erie county.

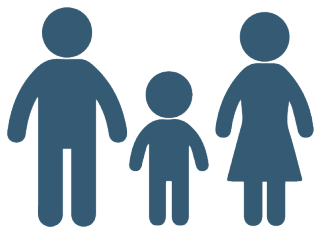


**Thrifty Shopper Erie**

Discover hidden treasures in our Thrifty Shopper social enterprise stores. The Thrifty Shopper Erie store is adjacent to the Donation Center warehouse. Items for purchase are provided through donations collected through the DC and generate revenue to support the Mission's efforts in "restoring hope and changing lives". Stop by to find high quality clothing, shoes, purses, accessories, household items and decor at unbeatable prices.

**Thrifty Shopper Girard**

Funds Generated from our Thrifty Shopper, Girard and Erie retail stores directly support the programs and services of the Mission. Located on Ridge Road in Girard, the Thrifty Shopper provides high quality second hand clothing for men, women and children, as well as shoes, purses, jewelry, household items and furniture.



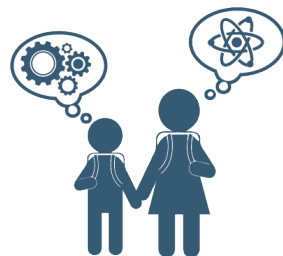
Households helped  
through Family Care



145,717  
Meals provided



88  
New Life Participants  
received shelter and recovery



350  
Children participated in our  
youth ministry programs

8,477

Families provided  
with free food



5,747

Households provided  
with free clothing



Our purpose at the Erie City Mission has  
remained unchanged - providing hope where  
there is hunger, homelessness and addiction.  
No matter what storms come, we remain

**STEADFAST.**



55,580  
Volunteer hours served

\$444,640

Estimated value of  
volunteer hours

2,000

Volunteers joined  
the Mission in service



16,352  
Approximate number of  
shelter bed nights



16  
Grace House participants  
received shelter and recovery



11  
Companies partnered with us  
in a food recovery initiative

# SUPPORT AND REVENUE CONTRIBUTIONS

2015

2014

Contributed support

\$1,856,198

\$1,558,971

Capital Campaign - *restricted*

\$1,336,062

\$283,240

Grants

\$258,371

\$201,636

Gifts-in-kind

\$718,961

\$704,035

**Total Contributions**

**\$4,169,592**

**\$2,747,882**

## REVENUE

Program service revenue & other

\$878,448

\$986,079

**Total Support & Revenue**

**\$5,048,040**

**\$3,733,961**

**Total Support & Revenue (Less: *Capital Campaign*)**

**\$3,711,978**

**\$3,450,721**

## EXPENSES

### SERVICES & MANAGEMENT

Mission ministries

\$3,014,907

\$3,049,856

General management & fundraising

\$767,100

\$780,839

**Total Expenses**

**\$3,782,007**

**\$3,830,695**

# WAYS TO PARTNER

## VOLUNTEER

- ⚓ Serve a meal
- ⚓ Sort food or clothing
- ⚓ Conduct a food, personal hygiene or diaper drive
- ⚓ Join our Youth Ministry mentor team

## DONATE

- ⚓ Donate online: <http://www.eriecitymission.org/get-involved/donate>
- ⚓ Include the Mission in your will
- ⚓ Become a monthly or quarterly donor
- ⚓ Donate a vehicle
- ⚓ Ask your HR representative about workplace giving and a company match
- ⚓ Bless those in need with simple everyday items from our Wish List (found on our website).

## SPONSOR AN EVENT

- ⚓ Attend an event to benefit the Mission
- ⚓ Become a corporate partner through monetary or gift-in-kind contributions

## PRAY

- ⚓ Pray for those experiencing homelessness and poverty in our community



Our Mission – To provide quality services and care that restores individuals, families and communities impacted by the effects of addictions, poverty, homelessness and lack of hope.

Erie City Mission is a member in good standing with the Evangelical Council for Financial Accountability (ECFA). Financial reporting is from fiscal year October 1, 2014 through September 31, 2015. Complete audited financial statements are available upon request. A digital copy of this annual report can be downloaded at <http://www.eriecitymission.org/news-and-events/publications>.

Erie City Mission, P.O. Box 407, Erie, PA 16512, Phone: 814.452.4421, [eriecitymission.org](http://eriecitymission.org)